



G A R Kansas



G A R Home Town



Moore Park
our bloodlines...your success

On Property Twilight Angus Bull Sale
July 29 2024 3:30pm, 3420 Pinkett Road, "Glenmore"
 • Interfaced on Auctions Plus • Phone Tom Williamson 0429908324 •
 Selling Agent Shad Bailey 0458 322 283 (Colin Say & Co)

<i>Reference Sires</i>	Calving Ease Direct	Calving Ease Dtrs	Gestation Length	Birth Weight	200 Day Growth	400 Day Weight	600 Day Weight	Mat. Cow Weight	Milk	Days to Calving	Scrotal Size	Carcase Weight	Eye Muscle Area	Rib Fat	Rump Fat	Retail Beef Yield	IMF
G A R HOME TOWN	+4.3	-0.2	-5.8	+2.4	+56	+99	+113	+73	+12	-6.5	+0.9	+70	+13.8	-2.3	-3.9	+1.1	+4.8
G A R Phoenix	+8.0	+4.3	-2.7	+3.0	+71	+126	+161	+142	+18	-6.2	+4.4	+94	+9.3	-2.5	-3.1	+1.2	+2.3
G A R Kansas	+4.0	-0.9	-8.5	+2.4	+62	+113	+137	+105	+19	-2.1	+2.4	+76	+13.3	-1.6	-2.1	+0.4	+3.9
Ayrvale Bartel E7	+8.5	+9.2	-4.4	+1.8	+49	+86	+113	+74	+26	-8.4	+2.6	+64	+7.6	-0.7	+0.5	+1.3	+3.4
Breed Avg EBVs	+2.2	+2.6	-4.8	+4.1	+50	+90	+117	+17	+2.3	+100	-4.6	+2.1	+66	+6.3	+0.0	+0.8	+0.5

Top 5% Breed Top 10% Breed Top 20% Breed Top 25% Breed

Breed Average EBVs sourced from Trans Tasman Angus Cattle Evaluation – July 2024 Reference Tables

<i>Reference Sires</i>	Angus Breeding Index	Domestic Index	Heavy Grain Index	Heavy Grass Index	Angus Breeding Low Feed Cost Index	Domestic Low Feed Cost Index	Heavy Grain Low Feed Cost Index	Heavy Grass Low Feed Cost Index	AngusPRO Index	Angus Terminal Sire Index
G A R HOME TOWN	\$290	\$249	\$391	\$274	\$430	\$377	\$534	\$471	\$235	\$232
G A R Phoenix	\$287	\$247	\$368	\$273	\$495	\$437	\$583	\$560	\$243	\$257
G A R Kansas	\$242	\$197	\$346	\$225	\$394	\$335	\$501	\$427	\$175	\$242
Ayrvale Bartel E7	\$289	\$241	\$366	\$277	\$448	\$387	\$530	\$507	\$240	\$212
Breed Avg Selection Indexes	+200	+166	+264	+184	+345	+298	+412	+386	+149	+185

GAR Home Town is the complete package of the ideal traits of merit.

Big-hipped, wide based with an attractive herd bull presence, his carcass data and the appeal of his females are a standout. His EMA and IMF sits in the top 2% and 6% of the breed respectively with an 91% accuracy level.



G A R Home Town USA19266718

GAR Phoenix offers genetics for growth and carcass merit like few can. He is a leading \$Value index sire in Australia and the world, while still offering well above average EBVs for calving ease. His progeny are known to hit growth targets and mature early. 200 and 400 day growth in the top 1% with 98% accuracy.



G A R Phoenix USA18636106

GAR Kansas is an elite calving ease Ashland son. He will create resilient females and rugged sons with genuine performance who will define Angus breed ideals. His name popped up in our Beef Australia win from our first crop of calves, verifying carcass merit in a masculine package.



G A R Kansas USA19266637

Ayrvale Bartel E7 is possibly one of the standout Angus bulls of our time and our cows went from strength to strength after his introduction into our herd. Long deceased, Bartel continues to dominate and still consistently ranks highly over multiple traits including calving ease, growth and carcass performance.



Ayrvale Bartel E7 HIOE7

Welcome

It's hard to believe 12 months have passed since our 2023 sale and as we work towards hosting you on property for the first time, it makes you realise how many people contribute to sale day. The feedback we received from clients last year we appreciate and it has contributed towards our selection of bulls for this year's sale.

Firstly people valued that our selection of bulls was a line rather than a bag of missed lollies. To be able to come and view multiple bulls from the one sire meant they could develop their own overall picture and gave them the option to develop a line in their own herd. We have continued this in our catalogue for 2024. Our reference sires already have thousands of progeny analysed and the results on these bull's calving ease, growth, marble and muscle are longstanding. While we aim for growth, our target is efficient growth – growth we get paid for. Yield is a profit driver for you and traders. While many think if they sell at weaner sales they just get paid on weight, times are changing. More and more traders are following genetics and the carcass data of their purchases. Our goal is to breed cattle that feedlots, processors and traders come looking to pay a premium for ie. cattle that MSA index, marble and yield. We begin with the end in mind.

Secondly more and more people are looking to purchase their bulls as yearlings and as a result we have expanded our offering of U bulls. Purchasing a yearling bull means he can adapt as a younger animal to your operation's environment, nutrition and handling techniques and gives you the opportunity to have an extra year out of your purchase. Our bulls have been finished in 2024 on oats, rye and brassica crops and have received supplementary mineral pellets in addition.

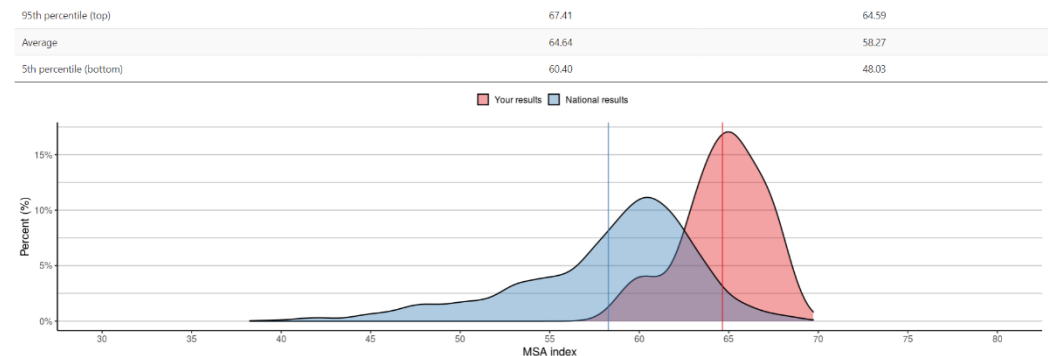
Thirdly, we continue to use our own carcass data to validate what we have kept as bulls. Having never entered a carcass competition previously, we decided to aim high and enter Beef Australia in Rockhampton. An Australia wide competition run only every three years, India's entry of three MILK tooth steers walked away with victory in the pasture fed pen of three Heavy Trade Chiller Steers or Heifers 280-360kg carcass weight, while her second entry in the class came fourth. Unexpectedly, we then received a call from NH Foods in May telling us they had selected a single striploin from body 256 and used it to enter the Royal QLD Branded Beef Awards, winning their class by 12 points. You can read more about these wins on page 5. These steers are the brothers to the T bulls in the sale and as you can see from the overall benchmarking 2023/24 MSA report below, these genetics are hitting the right target. Make no mistake, we are not a stud that keeps everything as a bull. We cull hard, just like we do our stud and commercial females.

Regardless of your operation's goals, whether it is to improve your pregnancy rates, carcass quality, reduce debt or expand and buy more country, we believe these profit driven genetics can assist in achieving these objectives.

We look forward to welcoming you on July 29.

Regards

Tom, Jane, Tommy and India





How to register as an AuctionsPlus user/buyer

1. To sign up to AuctionsPlus, fill in your details and create a security PIN.
2. Verify your email and phone number.
3. Follow the steps to verify your ID.
4. Enter your PIC number, ABN and business details if relevant.
5. Carefully read and accept our user rules and responsibilities.
6. Complete the user quiz.
7. Submit your request to our team.



Scan to sign up now



Scan to see detailed
step by step instructions

www.auctionsplus.com.au



(02) 9262 4222



ONE CHOICE



Oino Gustus is taken from the Celtic origin of the name Angus. Meaning "One Choice" these two words illustrate the culture that stands behind the Signature Beef suite of brands.

Sale Information

Inspection

All Stock will be penned from 1pm Sale Day. Inspection can be arranged any time prior to sale day by appointment with the agents or vendor. No children shall enter any pens. This is part of our OH&S policy.

Notice to Buyers

All lots will be sold subject to the usual conditions governing auction sales in NSW.

Bidding

The sale will be interfaced with Auctions Plus. Please refer to instructions on how to register and bid on Page 2. Not tech savvy? Phone bidding will also be available. Contact Colin Say & Co or Tom and Jane for more information.

Buyer's Instruction Slip and Transport Arrangements

Please supply correct and complete name, address, PIC (Property Identification Code), delivery instructions and contact details on the Buyer's Instruction Slip to ensure smooth transport and NLIS transfer arrangements.

Insurance

We recommend insuring your new bull on sale day. A Colin Say and Co representative will be available on sale day to arrange this if you do not have an existing broker.

Rebate

3% rebate available to outside agents following written introduction at least 24 hrs prior to sale if settlement occurs within 7 days of receipt of invoice.

Refreshments

Will be available on the night. Gold coin donation to the Westpac Rescue Helicopter.

Vaccination Program

JBAS=6

7 in 1 at weaning. Last booster April 2024 – booster required April 2025.

Exifluke – April 2024.

Dectomax Injectable – June 2024.

Cobalife B12 – April 2024.

Pestiguard Vaccination given April 2024 – booster required April 2025.

Tick Fever Vaccination given June 2024

Return to "Home" All bulls will be returned to paddock at the completion of the sale, with delivery/pickup available from the following day July 30. Please contact Tom to discuss options if you are not ready to take delivery of your bull straight away, particularly if you require coverage with any additional vaccinations not specified. As offered last year, we can assist you with delivery of bulls when possible. We are happy to continue to run all sale bulls for convenience and provide transport, but at the purchaser's risk from the fall of the hammer. As stated, we recommend insuring your bull on sale day.

Our Guarantee To You

To the best of our knowledge, we believe the bulls in this catalogue are fertile and structurally sound. All bulls have been semen tested by Nathan Kruidenier, Bovine Breeders, Armidale NSW. If, in the next 12 months, a bull becomes infertile or breakdown due to reasons other than injury or misadventure, we will provide you with a satisfactory replacement if available, or issue you with a credit equal to the purchase price less the salvage value. This credit may be used to purchase any bull or female offered at future Moore Park Sales. Any claims are to be substantiated by a veterinary certificate and photograph of the bull from a registered veterinarian. All vet costs are the responsibility of the purchase

EBVs

A guide to understanding estimated breeding values (EBVs) and choosing the selection index of relevance to your breeding program can be found on Page 4. Due to being a young stud, we have used a combination of EBVs, Expected Average progeny EBVs and Sire EBVs in our data. We support, value and use EBVs to form decisions in our own breeding herd. However, these are a guide only. Knowledge of your own breeding females and your personal objectives should always take precedence when considering potential purchases.

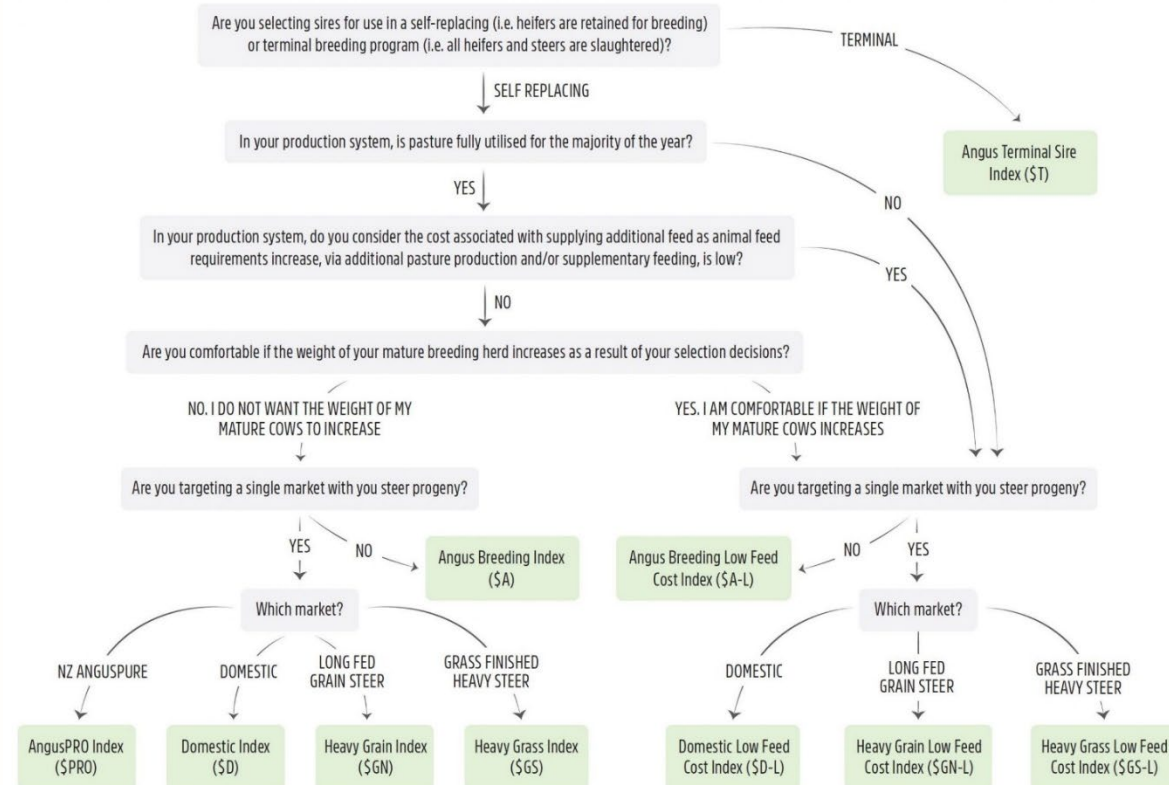
Disclaimer

Whilst all care and attention has been paid to the accuracy in the compilation of this catalogue, neither the vendors nor the selling agents or representatives thereof, nor Angus Australia assume any responsibility whatsoever for the correctness, use or interpretation of the information on the animals included in this sale catalogue.

UNDERSTANDING ESTIMATED BREEDING VALUES (EBVS)

CALVING EASE/BIRTH			
Calving Ease Direct	%	Genetic differences in the ability of a sire's calves to be born unassisted from 2 year old heifers.	Higher EBVs indicate fewer calving difficulties in 2 year old heifers.
Calving Ease Daughters	%	Genetic differences in the ability of a sire's daughters to calve unassisted at 2 years of age.	Higher EBVs indicate fewer calving difficulties in 2 year old heifers.
Gestation Length	days	Genetic differences between animals in the length of time from the date of conception to the birth of the calf.	Lower EBVs indicate shorter gestation length.
Birth Weight	kg	Genetic differences between animals in calf weight at birth.	Lower EBVs indicate lighter birth weight.
GROWTH			
200 Day Growth	kg	Genetic differences between animals in live weight at 200 days of age due to genetics for growth.	Higher EBVs indicate heavier live weight.
400 Day Weight	kg	Genetic differences between animals in live weight at 400 days of age.	Higher EBVs indicate heavier live weight.
600 Day Weight	kg	Genetic differences between animals in live weight at 600 days of age.	Higher EBVs indicate heavier live weight.
Mature Cow Weight	kg	Genetic differences between animals in live weight of cows at 5 years of age.	Higher EBVs indicate heavier mature weight.
Milk	kg	Genetic differences between animals in live weight at 200 days of age due to the maternal contribution of its dam.	Higher EBVs indicate heavier live weight.
FERTILITY			
Days to Calving	days	Genetic differences between animals in the time from the start of the joining period (i.e. when the female is introduced to a bull) until subsequent calving.	Lower EBVs indicate shorter time to calving.
Scrotal Size	cm	Genetic differences between animals in scrotal circumference at 400 days of age.	Higher EBVs indicate larger scrotal circumference.
CARCASE			
Carcase Weight	kg	Genetic differences between animals in hot standard carcass weight at 750 days of age.	Higher EBVs indicate heavier carcass weight.
Eye Muscle Area	cm ²	Genetic differences between animals in eye muscle area at the 12/13th rib site in a 400 kg carcass.	Higher EBVs indicate larger eye muscle area.
Rib Fat	mm	Genetic differences between animals in fat depth at the 12/13th rib site in a 400 kg carcass.	Higher EBVs indicate more fat.
Rump Fat	mm	Genetic differences between animals in fat depth at the P8 rump site in a 400 kg carcass.	Higher EBVs indicate more fat.
Retail Beef Yield	%	Genetic differences between animals in boned out saleable meat from a 400 kg carcass.	Higher EBVs indicate higher yield.
Intramuscular Fat	%	Genetic differences between animals in intramuscular fat (marbling) at the 12/13th rib site in a 400 kg carcass.	Higher EBVs indicate more intramuscular fat.

Choosing the selection index of relevance to your breeding program





The AMPC National Beef Carcase Competition, supported by MLA Meat Standards Australia aims to give feedback to producers about compliance of beef carcasses to market specifications, lean meat yield, and predicted eating quality of those carcasses (MSA index). The appraisal system utilised in the competition is specifically designed to meet both export and domestic market requirements and uses the latest technology available to the beef industry. Entries from TAS, VIC, SA, WA, QLD and NSW made up the nominations of Class 2 in 2024, with 75 bodies nominated in this particular class.

Two Home Town and one Kansas steer out of Bartel, Sunrise and Prophet cows made up the winning entry in Class 2: Heavy Trade Pasture Fed (280.1kg - 360kg). The lead steer of the pen sired by Home Town had a huge IMF of 7 with EMA (cm2) of 90 and a Lean Meat Yield of 59.46%. Meanwhile Body 259 also by Home Town scored a 4 for marble and received 10/10 for Marketing Specification point allocation. The pen walked away with a total of 283.93/306 points, taking the win by 7.39. Her second pen of three, made up of two Kansas and one Phoenix, with similar cow lines finished 4th. The lead steer in this pen, by Kansas also had an IMF of 7 with a whopping EMA of 98, Lean Meat Yield of 59.42% 9/10 for marketing specifications, scoring a total of 95.01/100 individual carcass body points. Oh if only he had been in the same pen as the winning entry!

What we learned from out disqualified entries.....

India's two entries in Class 7: Heavy Trade Unrestricted Feeding (grain assisted - 260.1kg - 360kg) in essence were disqualified due to 4 of the 6 MILK tooth bodies falling out of the weight constraints of a maximum weight of 360kg. These Phoenix and Home Town son's high yield blew them completely out of spec, with one's dead weight at 397kg – a good problem for profit – just not good if you want to enter a competition! The growth EBVs of these steers genetics did not indicate they would perform as highly as this. This is a good reminder that growth EBVs don't always indicate efficient growth. Large bone, "waste fat" (eg. rump) all gets discarded but can make 200, 400, 600 day EBVs look impressive. Profitable cattle come from moderate frame, high muscle, early maturing cattle with "taste fat" (IMF), which results in high yield ie. as indicated in Yield EBVs and Profitability Selection Indexes.



Led by Chief Judge Elaine Millar, along with a team of expert judges, including top chefs from award-winning restaurants, butchers, food consultants and food journalists, the Royal Queensland Branded Beef Awards presented by Rabobank aimed to unearth the nation's finest beef in the retail market. Cooked and prepared by food scientists, with precise cooking requirements, the meat is presented to judges in its perfect state. It is then judged based on its appearance (raw), tenderness, flavour, juiciness and overall liking for a total of 100 points.

Earning the gold medal and first place in the Grassfed beef class was NH Foods' Manning Valley Naturally Certified grassfed brand. Produced out of NH Foods' Wingham Beef Exports plant on the NSW Central Coast, the Manning Valley Naturally program has expanded in volume since its launch in 2011. The brand identity is built around locally-sourced, HGP-free, certified grassfed, largely British-based yearling cattle for a heavy-domestic program. Carcase weights range from about 280kg to 340kg.

The striploin nominated came from body 256 - MILK tooth steer 600kg before curfew, 335kg dead, 12mm Rump, 4mm Rib MSA Index 67.16 by Home Town out of a Bartel /Prophet cow, taking the win by 12 points.

BRANDED BEEF					
Award	Cat. No.	Exhibitor	Commercial Name	State	Score
CLASS 1					
Grain Fed Class					
Gold	3	JBS Australia	Portoro, Marble Score 4+, JBS Farm Assured Natural Grain	VIC	89.8
Silver	2	JBS Australia	JBS Australia Riverina Angus MB2+ MSA	QLD	81.7
Bronze	5	Mort & Co	Sir Thomas	QLD	80.8
	1	Andrews Meat Industries	Grainge	NSW	78.0
	4	Kilcoy Global Foods	Ebony Choice Black Angus	QLD	70.3
	6	NH Foods Australia	Angus Reserve Black Angus Beef	NSW	74.3
	7	Stanbroke	Diamantina Angus	QLD	77.8
	9	The North Australian Pastoral Company	Five Founders Real Australian Beef	QLD	65.5
	10	Thomas Foods International	Angus Pure Grain Fed Beef	QLD	76.0
CLASS 2					
Grass Fed Class					
Gold	15	NH Foods Australia	Manning Valley Naturally Grassfed Beef	NSW	83.3
Silver	13	JBS Australia	Great Southern Pinnacle, Marble Score 2+, JBS Farm Assured	VIC	71.0
Bronze	16	Stanbroke	Flinders Natural	QLD	69.8
	11	Coles	Coles Graze Grassfed Beef	QLD	65.9
	12	Hewitt Foods	The Organic Meat Company	QLD	44.3
	14	NH Foods Australia	Nature's Fresh Natural Beef	NSW	67.3



2016 - 2023
AQHA LEADING SIRE

\$70,971,634



Lot 1 Moore Park T92sv							Selection Indexes	Angus Breeding Index	Domestic Index	Heavy Grain Index	Heavy Grass Index	Angus Breeding Low Feed Cost Index	Domestic Low Feed Cost Index	Heavy Grain Low Feed Cost Index	Heavy Grass Low Feed Cost Index	AngusPRO Index	Angus Terminal Sire Index
HBR IDENT: MPL22T92 DOB 30/07/2022							MPL22T92	\$271	\$229	\$355	\$255	\$414	\$360	\$502	\$460	\$213	\$216
							A Breed Avg	+200	+166	+264	+184	+345	+298	+412	+386	+149	+185
EBVs	Calving Ease Direct	Calving Ease Dtrs	Gestation Length	Birth Weight	200 Day Growth	400 Day Weight	600 Day Weight	Mat. Cow Weight	Milk	Days to Calving	Scrotal Size	Carcase Weight	Eye Muscle Area	Rib Fat	Rump Fat	Retail Beef Yield	IMF
MPL22T92	+3.6	+2.8	-5.0	+3.0	+53	+95	+116	+79	+18	-6.4	+1.9	+69	+10.8	-1.5	-2.1	+1.1	+3.8
A Breed Avg	+1.7	+2.7	-4.4	+4.0	+51	+92	+119	+102	+17	-4.6	+2.2	+67	+6.4	-0.1	-0.3	+0.5	+2.3

Sire: G A R EARLY BIRD#
Sire: G A R ASHLANDPv
Dam: CHAIR ROCK AMBUSH 1018#
Sire: G A R HOME TOWNPv
Sire: G A R SURE FIREsv
Dam: CHAIR ROCK SURE FIRE 6095#
Dam: CHAIR ROCK PROGRESS 3005#

Sire: TE MANIA BARTEL B219Pv
Sire: AYRVALE BARTEL E7Pv
Dam: EAGLEHAWK JEDDA B32sv
Dam: MOORE PARK P71#
Sire: THE GRANGE ECHELON E179Pv
Dam: ABERDEEN ESTATE NANNY G26#
Dam: VERMONT NANNY E060Pv

Comments: The magic cross of Home Town and Bartel, T92 bloodlines offers calving ease, early growth, marble and muscle to another level. Excelling across the board with 9/10 selection indexes in the top 5% and 10% of the breed.

[View Lot 1 Video](#)

Purchaser:
Price: \$

Lot 2 Moore Park T150sv							Selection Indexes	Angus Breeding Index	Domestic Index	Heavy Grain Index	Heavy Grass Index	Angus Breeding Low Feed Cost Index	Domestic Low Feed Cost Index	Heavy Grain Low Feed Cost Index	Heavy Grass Low Feed Cost Index	AngusPRO Index	Angus Terminal Sire Index
HBR IDENT: MPL22T150 DOB 01/10/2022							MPL22T150	\$246	\$203	\$332	\$229	\$393	\$338	\$483	\$431	\$185	\$215
							A Breed Avg	+200	+166	+264	+184	+345	+298	+412	+386	149	+185
EBVs	Calving Ease Direct	Calving Ease Dtrs	Gestation Length	Birth Weight	200 Day Growth	400 Day Weight	600 Day Weight	Mat. Cow Weight	Milk	Days to Calving	Scrotal Size	Carcase Weight	Eye Muscle Area	Rib Fat	Rump Fat	Retail Beef Yield	IMF
MPL22T150	+5.8	+4.4	-6.3	+2.1	+52	+95	+117	+84	+21	-4.6	+2.1	+68	+10.3	-0.7	-0.9	+0.6	+3.6
A Breed Avg	+1.7	+2.7	-4.4	+4.0	+51	+92	+119	+102	+17	-4.6	+2.2	+67	+6.4	-0.1	-0.3	+0.5	+2.3

Sire: G A R EARLY BIRD#
Sire: G A R ASHLANDPv
Dam: CHAIR ROCK AMBUSH 1018#
Sire: G A R HOME TOWNPv
Sire: G A R SURE FIREsv
Dam: CHAIR ROCK SURE FIRE 6095#
Dam: CHAIR ROCK PROGRESS 3005#

Sire: TE MANIA BARTEL B219Pv
Sire: AYRVALE BARTEL E7Pv
Dam: EAGLEHAWK JEDDA B32sv
Dam: MOORE PARK Q61#
Sire: WATTLETOP REGENT J78sv
Dam: WATTLETOP ANN L348#
Dam: WATTLETOP ANN A349#

Comments: A Home Town son with a lot of capacity. True carcass merit with marble in a masculine package.

Purchaser:
Price: \$



- Top 5%
- Top 10%
- Top 20%
- Top 25%

Lot 3 Moore Park T203pv							Selection Indexes	Angus Breeding Index	Domestic Index	Heavy Grain Index	Heavy Grass Index	Angus Breeding Low Feed Cost Index	Domestic Low Feed Cost Index	Heavy Grain Low Feed Cost Index	Heavy Grass Low Feed Cost Index	AngusPRO Index	Angus Terminal Sire Index
HBR IDENT: MPL22T203 DOB 20/08/2022							MPL22T203	\$242	\$200	\$326	\$224	\$392	\$337	\$479	\$433	\$184	\$215
							A Breed Avg	+200	+166	+264	+184	+345	+298	+412	+386	+149	+185
EBVs	Calving Ease Direct	Calving Ease Dtrs	Gestation Length	Birth Weight	200 Day Growth	400 Day Weight	600 Day Weight	Mat. Cow Weight	Milk	Days to Calving	Scrotal Size	Carcase Weight	Eye Muscle Area	Rib Fat	Rump Fat	Retail Beef Yield	IMF
MPL22T203	+4.7	+0.3	-4.5	+3.5	+58	+102	+128	+98	+16	-4.8	+1.2	+77	+8.0	-0.9	-2.3	+0.3	+3.5
A Breed Avg	+1.7	+2.7	-4.4	+4.0	+51	+92	+119	+102	+17	-4.6	+2.2	+67	+6.4	-0.1	-0.3	+0.5	+2.3

Sire: G A R EARLY BIRD#

Sire: G A R ASHLANDpv

Dam: CHAIR ROCK AMBUSH 1018#

Sire: G A R HOME TOWNpv

Sire: G A R SURE FIREsv

Dam: CHAIR ROCK SURE FIRE 6095#

Dam: CHAIR ROCK PROGRESS 3005#

Sire: S A V FINAL ANSWER 0035#

Sire: S A V THUNDERBIRD 9061sv

Dam: S A V EMBLYNETTE 7411#

Dam: MURRAY THUNDERBIRD K9pv

Sire: EXAR UPSHOT 0562B#

Dam: MURRAY UPSHOT H31pv

Dam: MURRAY BERKLEY F23pv



Comments: Great skin and hairtype on this Home Town son. His topline and phenotype are impressive and he will suit a range of environments.

Purchaser: Price: \$

Lot 4 Moore Park T87sv							Selection Indexes	Angus Breeding Index	Domestic Index	Heavy Grain Index	Heavy Grass Index	Angus Breeding Low Feed Cost Index	Domestic Low Feed Cost Index	Heavy Grain Low Feed Cost Index	Heavy Grass Low Feed Cost Index	AngusPRO Index	Angus Terminal Sire Index
HBR IDENT: MPL22T87 DOB 30/07/2022							MPL22T87	\$231	\$194	\$308	\$212	\$366	\$317	\$446	\$400	\$166	\$204
							A Breed Avg	+200	+166	+264	+184	+345	+298	+412	+386	+149	+185
EBVs	Calving Ease Direct	Calving Ease Dtrs	Gestation Length	Birth Weight	200 Day Growth	400 Day Weight	600 Day Weight	Mat. Cow Weight	Milk	Days to Calving	Scrotal Size	Carcase Weight	Eye Muscle Area	Rib Fat	Rump Fat	Retail Beef Yield	IMF
MPL22T87	+1.0	+0.8	-3.3	+3.5	+54	+95	+117	+93	+16	-4.4	+1.4	+73	+9.8	-3.1	-3.7	+1.2	+3.4
A Breed Avg	+1.7	+2.7	-4.4	+4.0	+51	+92	+119	+102	+17	-4.6	+2.2	+67	+6.4	-0.1	-0.3	+0.5	+2.3

Sire: G A R EARLY BIRD#

Sire: G A R ASHLANDpv

Dam: CHAIR ROCK AMBUSH 1018#

Sire: G A R HOME TOWNpv

Sire: G A R SURE FIREsv

Dam: CHAIR ROCK SURE FIRE 6095#

Dam: CHAIR ROCK PROGRESS 3005#

Sire: SITZ NEW DESIGN 458N#

Sire: WATTLETOP SITZ 458N E111sv

Dam: WATTLETOP DANDLOO C36sv

Dam: MOORE PARK USAL K300#

Sire: SILVEIRAS M811 TOTAL 6103#

Dam: WATTLETOP USUAL H23#

Dam: WATTLETOP USUAL F62#



Comments: A striking appearance on this big hipped, well muscled Home Town son. T87 comes from a great producing cow in K300 who carries Wattletop bloodlines top and bottom.

Purchaser: Price: \$

- Top 5%
- Top 10%
- Top 20%
- Top 25%

Lot 5 Moore Park Ultimate U9 HBR IDENT: MPL23U9 DOB 01/03/2023							Expected Average Progeny Values	Angus Breeding Index	Domestic Index	Heavy Grain Index	Heavy Grass Index	Angus Breeding Low Feed Cost Index	Domestic Low Feed Cost Index	Heavy Grain Low Feed Cost Index	Heavy Grass Low Feed Cost Index	AngusPRO Index	Angus Terminal Sire Index
							MPL23U9	\$260	\$223	\$333	\$245	\$432	\$380	\$509	\$484	\$209	\$221
							A Breed Avg	+200	+166	+264	+184	+345	+298	+412	+386	+149	+185
Expected Average Progeny Values	Calving Ease Direct	Calving Ease Dtrs	Gestation Length	Birth Weight	200 Day Growth	400 Day Weight	600 Day Weight	Mat. Cow Weight	Milk	Days to Calving	Scrotal Size	Carcase Weight	Eye Muscle Area	Rib Fat	Rump Fat	Retail Beef Yield	IMF
MPL23U9	+6.4	+4.3	-3.5	+3.3	+60	+105	+133	+109	+19	-6.0	+3.1	+78	+8.7	-1.6	-2.1	+1.3	+2.1
A Breed Avg	+1.7	+2.7	-4.4	+4.0	+52	+92	+119	+102	+17	-4.6	+2.2	+67	+6.4	-0.1	-0.3	+0.5	+2.3

Sire: CONNEALY IN SURE 8524#
 Sire: G A R SURE FIRESv
 Dam: CHAIR ROCK 5050 G A R 8086#
 Sire: G A R PHOENIXpv
 Sire: G A R PROPHETsv
 Dam: G A R PROPHET N744#
 Dam: G A R DAYBREAK 440#
 Sire: TE MANIA BARTEL B219pv
 Sire: AYRVALE BARTEL E7pv
 Dam: EAGLEHAWK JEDDA B32sv
 Dam: MOORE PARK IRIS Q3#
 Sire: EXAR UPSHOT 0562B#
 Dam: MOORE PARK IRIS K303#
 Dam: ABERDEEN ESTATE IRIS F26#

Comments: Unique. Ultimate. Unprescedented. A high indexing bull with great disposition, phenotype and genotype.
 He's pretty hard to miss.

[View Lot 5 Video](#)

Purchaser: **Price:** \$

Lot 6 Moore Park U26sv							Selection Indexes	Angus Breeding Index	Domestic Index	Heavy Grain Index	Heavy Grass Index	Angus Breeding Low Feed Cost Index	Domestic Low Feed Cost Index	Heavy Grain Low Feed Cost Index	Heavy Grass Low Feed Cost Index	AngusPRO Index	Angus Terminal Sire Index
HBR IDENT: MPL23U26 DOB 26/02/2023							MPL23U26	\$240	\$206	\$317	\$221	\$375	\$329	\$455	\$409	\$180	\$202
							A Breed Avg	+200	+166	+264	+184	+345	+298	+412	+386	+149	+185
EBVs	Calving Ease Direct	Calving Ease Dtrs	Gestation Length	Birth Weight	200 Day Growth	400 Day Weight	600 Day Weight	Mat. Cow Weight	Milk	Days to Calving	Scrotal Size	Carcase Weight	Eye Muscle Area	Rib Fat	Rump Fat	Retail Beef Yield	IMF
MPL23U26	+4.1	+0.1	-5.2	+3.5	+53	+94	+112	+80	+14	-5.2	+1.3	+67	+9.6	-1.5	-3.2	+0.9	+3.1
A Breed Avg	+1.7	+2.7	-4.4	+4.0	+52	+92	+119	+102	+17	-4.6	+2.2	+67	+6.4	-0.1	-0.3	+0.5	+2.3

Sire: G A R EARLY BIRD#
 Sire: G A R ASHLANDpv
 Dam: CHAIR ROCK AMBUSH 1018#
 Sire: G A R HOME TOWNpv
 Sire: G A R SURE FIRESv
 Dam: CHAIR ROCK SURE FIRE 6095#
 Dam: CHAIR ROCK PROGRESS 3005#
 Sire: SITZ UPWARD 307Rsv
 Sire: EXAR UPSHOT 0562B#
 Dam: EXAR BARBARA T020#
 Dam: MOORE PARK FINKS MIS K292#
 Sire: MYTTY IN FOCUS#
 Dam: KENNY'S CREEK FINKS MISS F843#
 Dam: KENNY'S CREEK FINKS MISS B44pv

Comments: A thick easy doing bull with all profitable indexes.

Purchaser: **Price:** \$



Top 5%
 Top 10%
 Top 20%
 Top 25%

Lot 7

Moore Park U37sv

HBRIDENT: MPL23U37DOB 02/04/2023

Selection Indexes	Angus Breeding Index	Domestic Index	Heavy Grain Index	Heavy Grass Index	Angus Breeding Low Feed Cost Index	Domestic Low Feed Cost Index	Heavy Grain Low Feed Cost Index	Heavy Grass Low Feed Cost Index	AngusPRO Index	Angus Terminal Sire Index
MPL23U37	\$248	\$204	\$323	\$233	\$396	\$340	\$475	\$441	\$193	\$199
A Breed Avg	+200	+166	+264	+184	+345	+298	+412	+386	+149	+185

EBVs	Calving Ease Direct	Calving Ease Dtrs	Gestation Length	Birth Weight	200 Day Growth	400 Day Weight	600 Day Weight	Mat. Cow Weight	Milk	Days to Calving	Scrotal Size	Carcase Weight	Eye Muscle Area	Rib Fat	Rump Fat	Retail Beef Yield	IMF
MPL23U37	+6.9	+8.0	-5.3	+1.6	+48	+85	+110	+75	+23	-6.0	+2.2	+62	+8.2	-1.0	-0.3	0.8	+3.2
A Breed Avg	+1.7	+2.7	-4.4	+4.0	+51	+92	+119	+102	+17	-4.6	+2.2	+67	+6.4	-0.1	-0.3	+0.5	+2.3

Sire: B/R NEW DIMENSION 7127sv
Sire: TE MANIA BARTEL B219pv
Dam: TE MANIA JEDDA W85#
Sire: MYTTY IN FOCUS#
Dam: EAGLEHAWK JEDDA B32sv
Dam: EAGLEHAWK JEDDA Z48#

Sire: SUMMITCREST COMPLETE 1P55#
Sire: KM BROKEN BOW 002pv
Dam: SUMMITCREST PRINCESS 0P12#
Sire: MURRAY GRANDO J136pv
Dam: MOORE PARK N21#
Dam: MURRAY ALTERNATIVE K107#

Sire: AYRVALE BARTEL E7pv
Dam: MOORE PARK S32#

Comments: An ideal heifer bull combining both the legend himself Ayrevale Bartel and Broken Bow, both known for their calving ease, milk and marble.

Purchaser:Price: \$

Lot 8

Moore Park U38sv

HBRIDENT: MPL23U38DOB 10/03/2023

Selection Indexes	Angus Breeding Index	Domestic Index	Heavy Grain Index	Heavy Grass Index	Angus Breeding Low Feed Cost Index	Domestic Low Feed Cost Index	Heavy Grain Low Feed Cost Index	Heavy Grass Low Feed Cost Index	AngusPRO Index	Angus Terminal Sire Index
MPL23U38	\$264	\$225	\$347	\$246	\$403	\$353	\$490	\$443	\$205	\$210
A Breed Avg	+200	+166	+264	+184	+345	+298	+412	+386	+149	+185

EBVs	Calving Ease Direct	Calving Ease Dtrs	Gestation Length	Birth Weight	200 Day Growth	400 Day Weight	600 Day Weight	Mat. Cow Weight	Milk	Days to Calving	Scrotal Size	Carcase Weight	Eye Muscle Area	Rib Fat	Rump Fat	Retail Beef Yield	IMF
MPL23U38	+4.8	+2.6	-5.1	+2.9	+52	+92	+110	+74	+18	-6.3	+1.4	+64	+10.2	-1.4	-2.0	+1.0	+3.6
A Breed Avg	+1.7	+2.7	-4.4	+4.0	+51	+92	+119	+102	+17	-4.6	+2.2	+67	+6.4	-0.1	-0.3	+0.5	+2.3


Sire: G A R EARLY BIRD#
Sire: G A R ASHLANDpv
Dam: CHAIR ROCK AMBUSH 1018#
Sire: G A R SURE FIREsv
Dam: CHAIR ROCK SURE FIRE 6095#
Dam: CHAIR ROCK PROGRESS 3005#

Sire: TE MANIA BARTEL B219pv
Sire: AYRVALE BARTEL E7pv
Dam: EAGLEHAWK JEDDA B32sv
Sire: EXAR UPSHOT 0562B#
Dam: MOORE PARK ANNIE L10#
Dam: KANSAS ANNIE Y71sv

Sire: G A R HOME TOWNpv
Dam: MOORE PARK Q28#

Comments: Out of the same cow as last year's sale topper, U38 is an attractive bull boasting marble and muscle, all the things we are trying to achieve with the traits of merit.

Purchaser:Price: \$



Top 5%
Top 10%
Top 20%
Top 25%

Lot 9 Moore Park T134sv							Expected Average Progeny Values	Angus Breeding Index	Domestic Index	Heavy Grain Index	Heavy Grass Index	Angus Breeding Low Feed Cost Index	Domestic Low Feed Cost Index	Heavy Grain Low Feed Cost Index	Heavy Grass Low Feed Cost Index	AngusPRO Index	Angus Terminal Sire Index
HBR IDENT: MPL22T134 DOB 01/09/2022							MPL22 T134	\$230	\$198	\$306	\$211	\$350	\$308	\$429	\$380	\$169	\$193
							A Breed Avg	+200	+166	+264	+184	+345	+298	+412	+386	+149	+185
Expected Average Progeny Values	Calving Ease Direct	Calving Ease Dtrs	Gestation Length	Birth Weight	200 Day Growth	400 Day Weight	600 Day Weight	Mat. Cow Weight	Milk	Days to Calving	Scrotal Size	Carcase Weight	Eye Muscle Area	Rib Fat	Rump Fat	Retail Beef Yield	IMF
MPL22 T134	+1.9	-2.2	-5.0	+3.9	+52	+90	+106	+74	+12	-4.7	+1.0	+66	+11.3	-1.5	-3.3	+1.3	+2.6
A Breed Avg	+1.7	+2.7	-4.4	+4.0	+51	+92	+119	+102	+17	-4.6	+2.2	+67	+6.4	-0.1	-0.3	+0.5	+2.3

Sire: G A R EARLY BIRD#
Sire: G A R ASHLANDPv
Dam: CHAIR ROCK AMBUSH 1018#
Sire: G A R HOME TOWNPv
Sire: G A R SURE FIREsv
Dam: CHAIR ROCK SURE FIRE 6095#
Dam: CHAIR ROCK PROGRESS 3005#

Sire: SITZ UPWARD 307Rsv
Sire: EXAR UPSHOT 0562B#
Dam: EXAR BARBARA T020#
Dam: MOORE PARK IRIS K303# (dec)
Sire: 21AR ROUNDUP 7005#
Dam: ABERDEEN ESTATE IRIS F26#
Dam: N BAR A2 IRIS C15sv

Comments: Free moving, active bull with plenty of volume.

Purchaser: Price: \$

Lot 10 Moore Park T103sv							Selection Indexes	Angus Breeding Index	Domestic Index	Heavy Grain Index	Heavy Grass Index	Angus Breeding Low Feed Cost Index	Domestic Low Feed Cost Index	Heavy Grain Low Feed Cost Index	Heavy Grass Low Feed Cost Index	AngusPRO Index	Angus Terminal Sire Index
APR IDENT: MPL22T103 DOB 01/09/2022							MPL22 T103	\$187	\$150	\$264	\$166	\$316	\$269	\$396	\$333	\$122	\$199
							A Breed Avg	+200	+166	+264	+184	+345	+298	+412	+386	+149	+185
EBVs	Calving Ease Direct	Calving Ease Dtrs	Gestation Length	Birth Weight	200 Day Growth	400 Day Weight	600 Day Weight	Mat. Cow Weight	Milk	Days to Calving	Scrotal Size	Carcase Weight	Eye Muscle Area	Rib Fat	Rump Fat	Retail Beef Yield	IMF
MPL22 T103	+2.9	+2.1	-4.3	+3.3	+52	+96	+119	+93	+15	-0.4	+2.1	+65	+9.4	-0.6	-0.9	+0.5	+2.6
A Breed Avg	+1.7	+2.7	-4.4	+4.0	+51	+92	+119	+102	+17	-4.6	+2.2	+67	+6.4	-0.1	-0.3	+0.5	+2.3

Sire: G A R EARLY BIRD#
Sire: G A R ASHLANDPv
Dam: CHAIR ROCK AMBUSH 1018#
Sire: G A R KANSASPv
Sire: G A R MOMENTUMPv
Dam: CHAIR ROCK MOMENTUM 6057#
Dam: CHAIR ROCK SURE FIRE 4060#

Dam: MOORE PARK R75#

Comments: This APR bull's dam is a long bodied, wide hipped, sharp fronted cow. T103 is large framed and masculine.

Purchaser: Price: \$



- Top 5%
- Top 10%
- Top 20%
- Top 25%

Lot 11

Moore Park T80

APR

IDENT: MPL22T80

DOB 02/09/2022

Selection Indexes	Angus Breeding Index	Domestic Index	Heavy Grain Index	Heavy Grass Index	Angus Breeding Low Feed Cost Index	Domestic Low Feed Cost Index	Heavy Grain Low Feed Cost Index	Heavy Grass Low Feed Cost Index	AngusPRO Index	Angus Terminal Sire Index
MPL22T80	\$211	\$176	\$288	\$191	\$334	\$289	\$413	\$355	\$151	\$194
A Breed Avg	+200	+166	+264	+184	+345	+298	+412	+386	+149	+185

EBVs	Calving Ease Direct	Calving Ease Dtrs	Gestation Length	Birth Weight	200 Day Growth	400 Day Weight	600 Day Weight	Mat. Cow Weight	Milk	Days to Calving	Scrotal Size	Carcase Weight	Eye Muscle Area	Rib Fat	Rump Fat	Retail Beef Yield	IMF
MPL22T80	+3.4	+2.6	-3.0	+3.0	+48	+88	+105	+75	+12	-2.6	+1.3	+61	+9.6	-0.9	-1.7	+0.8	+3.2
A Breed Avg	+1.7	+2.7	-4.4	+4.0	+51	+92	+119	+102	+17	-4.6	+2.2	+67	+6.4	-0.1	-0.3	+0.5	+2.3

Sire: G A R EARLY BIRD#

Sire: G A R ASHLANDpv

Dam: CHAIR ROCK AMBUSH 1018#


Sire: G A R HOME TOWNpv

Sire: G A R SURE FIREsv

Dam: CHAIR ROCK SURE FIRE 6095#

Dam: CHAIR ROCK PROGRESS 3005#

Dam: MOORE PARK Q31#



Comments: A smooth and thick Home Town son with a lot of muscle.

Purchaser: Price: \$

Lot 12

Moore Park T81sv

HBR

IDENT: MPL22T81

DOB 01/07/2022

Selection Indexes	Angus Breeding Index	Domestic Index	Heavy Grain Index	Heavy Grass Index	Angus Breeding Low Feed Cost Index	Domestic Low Feed Cost Index	Heavy Grain Low Feed Cost Index	Heavy Grass Low Feed Cost Index	AngusPRO Index	Angus Terminal Sire Index
MPL22T81	\$257	\$220	\$343	\$237	\$391	\$342	\$479	\$424	\$194	\$211
A Breed Avg	+200	+166	+264	+184	+345	+298	+412	+386	+149	+185

EBVs	Calving Ease Direct	Calving Ease Dtrs	Gestation Length	Birth Weight	200 Day Growth	400 Day Weight	600 Day Weight	Mat. Cow Weight	Milk	Days to Calving	Scrotal Size	Carcase Weight	Eye Muscle Area	Rib Fat	Rump Fat	Retail Beef Yield	IMF
MPL22T81	+2.8	-0.1	-4.0	+3.7	+56	+96	+113	+80	+14	-5.5	+0.8	+68	+9.9	-1.8	-3.2	+1.0	+3.6
A Breed Avg	+1.7	+2.7	-4.4	+4.0	+51	+92	+119	+102	+17	-4.6	+2.2	+67	+6.4	-0.1	-0.3	+0.5	+2.3

Sire: G A R EARLY BIRD#

Sire: G A R ASHLANDpv

Dam: CHAIR ROCK AMBUSH 1018#

Sire: G A R HOME TOWNpv

Sire: G A R SURE FIREsv

Dam: CHAIR ROCK SURE FIRE 6095#

Dam: CHAIR ROCK PROGRESS 3005#

Sire: C R A BEXTOR 872 5205 608#

Sire: G A R PROPHETsv

Dam: G A R OBJECTIVE 1885#

Dam: MOORE PARK M12#

Sire: 21AR ROUNDUP 7005#

Dam: ABERDEEN ESTATE IRIS F26#

Dam: N BAR A2 IRIS C15sv

Top 5%

Top 10%

Top 20%

Top 25%

Comments: Extremely long bodied bull with marble and muscle.

Purchaser: Price: \$

Lot 13

Moore Park T70sv

Selection Indexes	Angus Breeding Index	Domestic Index	Heavy Grain Index	Heavy Grass Index	Angus Breeding Low Feed Cost Index	Domestic Low Feed Cost Index	Heavy Grain Low Feed Cost Index	Heavy Grass Low Feed Cost Index	AngusPRO Index	Angus Terminal Sire Index
MPL22T70	\$237	\$201	\$312	\$218	\$368	\$320	\$446	\$408	\$177	\$196
A Breed Avg	+200	+166	+264	+184	+345	+298	+412	+386	+149	+185

EBVs	Calving Ease Direct	Calving Ease Dtrs	Gestation Length	Birth Weight	200 Day Growth	400 Day Weight	600 Day Weight	Mat. Cow Weight	Milk	Days to Calving	Scrotal Size	Carcase Weight	Eye Muscle Area	Rib Fat	Rump Fat	Retail Beef Yield	IMF
MPL22T70	-1.0	-1.0	-3.9	+4.6	+55	+93	+114	+89	+15	-6.0	+1.2	+70	+9.9	-1.9	-2.3	+1.0	+2.9
A Breed Avg	+1.7	+2.7	-4.4	+4.0	+51	+92	+119	+102	+17	-4.6	+2.2	+67	+6.4	-0.1	-0.3	+0.5	+2.3

Sire: G A R EARLY BIRD#

Sire: G A R ASHLANDPV

Dam: CHAIR ROCK AMBUSH 1018#

Sire: G A R HOME TOWNPV

Sire: G A R SURE FIRESV

Dam: CHAIR ROCK SURE FIRE 6095#

Dam: CHAIR ROCK PROGRESS 3005#

Sire: S A V HERITAGE 6295#

Sire: S A V HARVESTOR 0338#

Dam: S A V EMBLYNETTE 7749#

Dam: MOORE PARK N4#

Sire: SILVEIRAS M811 TOTAL 6103#


Dam: WATTLETOP BARUNAH H382#

Dam: WATTLETOP BARUNAH Z132PV

Comments: A long well muscled bull with a great disposition. N4 has been a great producer, being the dam of MPL21543 in last year's sale.

Purchaser:

Price: \$



Lot 14

Moore Park T156sv

Selection Indexes	Angus Breeding Index	Domestic Index	Heavy Grain Index	Heavy Grass Index	Angus Breeding Low Feed Cost Index	Domestic Low Feed Cost Index	Heavy Grain Low Feed Cost Index	Heavy Grass Low Feed Cost Index	AngusPRO Index	Angus Terminal Sire Index
MPL22T156	\$261	\$221	\$343	\$244	\$406	\$354	\$492	\$448	\$211	\$208
A Breed Avg	+200	+166	+264	+184	+345	+298	+412	+386	+149	+185

EBVs	Calving Ease Direct	Calving Ease Dtrs	Gestation Length	Birth Weight	200 Day Growth	400 Day Weight	600 Day Weight	Mat. Cow Weight	Milk	Days to Calving	Scrotal Size	Carcase Weight	Eye Muscle Area	Rib Fat	Rump Fat	Retail Beef Yield	IMF
MPL22T156	+5.4	+4.2	-5.0	+2.2	+50	+88	+106	+77	+15	-6.7	+1.5	+63	+9.2	-1.0	-1.7	+0.8	+4.2
A Breed Avg	+1.7	+2.7	-4.4	+4.0	+51	+92	+119	+102	+17	-4.6	+2.2	+67	+6.4	-0.1	-0.3	+0.5	+2.3

Sire: G A R EARLY BIRD#

Sire: G A R ASHLANDPV

Dam: CHAIR ROCK AMBUSH 1018#

Sire: G A R HOME TOWNPV

Sire: G A R SURE FIRESV

Dam: CHAIR ROCK SURE FIRE 6095#

Dam: CHAIR ROCK PROGRESS 3005#

Sire: TE MANIA BARTEL B219PV

Sire: AYRVALE BARTEL E7PV

Dam: EAGLEHAWK JEDDA B32sv

Dam: MOORE PARK P02#

Sire: MILLAH MURRAH EMPEROR H125sv


Dam: BOORAGUL K175#

Dam: BOORAGUL C98#

Comments: This bull encompasses everything we're trying to achieve at Moore Park. T156 is a very long muscled bull with a wide base, along with calving ease and Top 10% IMF.

Purchaser:

Price: \$



Top 5%

Top 10%

Top 20%

Top 25%

Lot 15 Moore Park T161sv							Selection Indexes	Angus Breeding Index	Domestic Index	Heavy Grain Index	Heavy Grass Index	Angus Breeding Low Feed Cost Index	Domestic Low Feed Cost Index	Heavy Grain Low Feed Cost Index	Heavy Grass Low Feed Cost Index	AngusPRO Index	Angus Terminal Sire Index
HBR IDENT: MPL22T161 DOB 23/08/2022							MPL22T161	\$212	\$179	\$277	\$194	\$357	\$311	\$425	\$398	\$152	\$194
							A Breed Avg	+200	+166	+264	+184	+345	+298	+412	+386	+149	+185
EBVs	Calving Ease Direct	Calving Ease Dtrs	Gestation Length	Birth Weight	200 Day Growth	400 Day Weight	600 Day Weight	Mat. Cow Weight	Milk	Days to Calving	Scrotal Size	Carcase Weight	Eye Muscle Area	Rib Fat	Rump Fat	Retail Beef Yield	IMF
MPL22T161	+0.1	-0.1	-5.0	+4.7	+55	+95	+121	+111	+15	-4.9	+1.8	+72	+9.6	-3.4	-4.4	+1.3	+2.6
A Breed Avg	+1.7	+2.7	-4.4	+4.0	+51	+92	+119	+102	+17	-4.6	+2.2	+67	+6.4	-0.1	-0.3	+0.5	+2.3

Sire: G A R EARLY BIRD#
Sire: G A R ASHLANDpv
Dam: CHAIR ROCK AMBUSH 1018#
Sire: G A R HOME TOWNpv
Sire: G A R SURE FIRESv
Dam: CHAIR ROCK SURE FIRE 6095#
Dam: CHAIR ROCK PROGRESS 3005#

Sire: TEHAMA TOTAL M811#
Sire: SILVEIRAS M811 TOTAL 6103#
Dam: SILVEIRA ELBA 3309#
Dam: WATTLETOP ANN H187#
Sire: WATTLETOP OB45 X75#
Dam: WATTLETOP ANN Z397sv
Dam: WATTLETOP ANN T105#



Comments: A bull with depth and a good topline out of a H Wattletop cow that’s still in the herd.

Purchaser: Price: \$

Lot 16 Moore Park T126sv							Selection Indexes	Angus Breeding Index	Domestic Index	Heavy Grain Index	Heavy Grass Index	Angus Breeding Low Feed Cost Index	Domestic Low Feed Cost Index	Heavy Grain Low Feed Cost Index	Heavy Grass Low Feed Cost Index	AngusPRO Index	Angus Terminal Sire Index
HBR IDENT: MPL22T126 DOB 01/09/2022							MPL22T161	\$268	\$226	\$355	\$251	\$406	\$352	\$496	\$445	\$211	\$211
							A Breed Avg	+200	+166	+264	+184	+345	+298	+412	+386	+149	+185
EBVs	Calving Ease Direct	Calving Ease Dtrs	Gestation Length	Birth Weight	200 Day Growth	400 Day Weight	600 Day Weight	Mat. Cow Weight	Milk	Days to Calving	Scrotal Size	Carcase Weight	Eye Muscle Area	Rib Fat	Rump Fat	Retail Beef Yield	IMF
MPL22T161	+5.4	+4.1	-5.2	+2.0	+51	+89	+107	+68	+17	-6.2	+1.4	+62	+11	-1.2	-1.8	+1.0	+3.8
A Breed Avg	+1.7	+2.7	-4.4	+4.0	+51	+92	+119	+102	+17	-4.6	+2.2	+67	+6.4	-0.1	-0.3	+0.5	+2.3

Sire: G A R EARLY BIRD#
Sire: G A R ASHLANDpv
Dam: CHAIR ROCK AMBUSH 1018#
Sire: G A R HOME TOWNpv
Sire: G A R SURE FIRESv
Dam: CHAIR ROCK SURE FIRE 6095#
Dam: CHAIR ROCK PROGRESS 3005#

Sire: TE MANIA BARTEL B219pv
Sire: AYRVALE BARTEL E7pv
Dam: EAGLEHAWK JEDDA B32sv
Dam: MOORE PARK P67#
Sire: EXAR UPSHOT 0562B#
Dam: MOORE PARK FINKS MISS L2#
Dam: KENNY'S CREEK FINKS MISS D118sv

Comments: This Home Town/ Bartel cross never dissapoints. He's a prime example of the traits of merit wiith marble and muscle.

Purchaser: Price: \$

- Top 5%
- Top 10%
- Top 20%
- Top 25%

Lot 17								Moore Park T58sv																					
APR								IDENT: MPL22T58		DOB 01/06/2022		Selection Indexes	Angus Breeding Index	Domestic Index	Heavy Grain Index	Heavy Grass Index	Angus Breeding Low Feed Cost Index	Domestic Low Feed Cost Index	Heavy Grain Low Feed Cost Index	Heavy Grass Low Feed Cost Index	AngusPRO Index	Angus Terminal Sire Index							
								MPL22T58		\$239		\$205		\$312		\$221		\$372		\$326		\$448		\$412		\$186		\$194	
								A Breed Avg		+200		+166		+264		+184		+345		+298		+412		+386		+149		+185	
EBVs	Calving Ease Direct	Calving Ease Dtrs	Gestation Length	Birth Weight	200 Day Growth	400 Day Weight	600 Day Weight	Mat. Cow Weight	Milk	Days to Calving	Scrotal Size	Carcase Weight	Eye Muscle Area	Rib Fat	Rump Fat	Retail Beef Yield	IMF												
MPL22T58	+1.2	+0.1	-3.9	+3.7	+51	+90	+109	+81	+14	-6.4	+1.3	+64	+9.2	-1.0	-1.3	+0.8	+3.0												
A Breed Avg	+1.7	+2.7	-4.4	+4.0	+51	+92	+119	+102	+17	-4.6	+2.2	+67	+6.4	-0.1	-0.3	+0.5	+2.3												
<div><div><div>Sire: G A R EARLY BIRD#</div><div>Sire: G A R ASHLANDPv</div><div>Dam: CHAIR ROCK AMBUSH 1018#</div><div>Sire: G A R HOME TOWNPv</div><div>Sire: G A R SURE FIREsv</div><div>Dam: CHAIR ROCK SURE FIRE 6095#</div><div>Dam: CHAIR ROCK PROGRESS 3005#</div></div><div><div>Sire: S A V HERITAGE 6295#</div><div>Sire: S A V HARVESTOR 0338#</div><div>Dam: S A V EMBLYNETTE 7749#</div><div>Dam: MOORE PARK BURNETTE K305#</div><div>Sire: BANQUET TIME FRAME Y135#</div><div>Dam: RAFF BURNETTE B148#</div><div>Dam: RAFF BURNETTE R60+96#</div></div></div>																													
Comments: A heavily muscled Home Town son.																													
Purchaser: Price: \$																													
Lot 18								Moore Park T138sv																					
HBR								IDENT: MPL22T138		DOB 01/09/2022		Selection Indexes	Angus Breeding Index	Domestic Index	Heavy Grain Index	Heavy Grass Index	Angus Breeding Low Feed Cost Index	Domestic Low Feed Cost Index	Heavy Grain Low Feed Cost Index	Heavy Grass Low Feed Cost Index	AngusPRO Index	Angus Terminal Sire Index							
								MPL22T138		\$202		\$165		\$281		\$183		\$332		\$283		\$413		\$363		\$135		\$200	
								A Breed Avg		+200		+166		+264		+184		+345		+298		+412		+386		+149		+185	
EBVs	Calving Ease Direct	Calving Ease Dtrs	Gestation Length	Birth Weight	200 Day Growth	400 Day Weight	600 Day Weight	Mat. Cow Weight	Milk	Days to Calving	Scrotal Size	Carcase Weight	Eye Muscle Area	Rib Fat	Rump Fat	Retail Beef Yield	IMF												
MPL22T138	-0.8	-1.5	-5.7	+4.2	+55	+99	+123	+98	+18	-2.9	+2.1	+70	+9.9	-1.3	-1.6	+0.4	+2.9												
A Breed Avg	+1.7	+2.7	-4.4	+4.0	+51	+92	+119	+102	+17	-4.6	+2.2	+67	+6.4	-0.1	-0.3	+0.5	+2.3												
<div><div><div>Sire: G A R EARLY BIRD#</div><div>Sire: G A R ASHLANDPv</div><div>Dam: CHAIR ROCK AMBUSH 1018#</div><div>Sire: G A R HOME TOWNPv</div><div>Sire: G A R SURE FIREsv</div><div>Dam: CHAIR ROCK SURE FIRE 6095#</div><div>Dam: CHAIR ROCK PROGRESS 3005#</div></div><div><div>Sire: STEVENSON CE DELUXE 1914#</div><div>Sire: C BAR D ALTERNATIVE K903#</div><div>Dam: C BAR D EXTRA IMAGE 330#</div><div>Dam: MURRAY ALTERNATIVE K107#</div><div>Sire: MURRAY 1407 B27sv</div><div>Dam: MURRAY B27 H119sv</div><div>Dam: WATTLETOP USUAL D111#</div></div></div>																													
Comments: T138 is an upstanding bull with a lot of length.																													
Purchaser: Price: \$																													

Top 5%

Top 10%

Top 20%

Top 25%



- Top 5%
- Top 10%
- Top 20%
- Top 25%

Lot 19							Expected Average Progeny Values	Angus Breeding Index	Domestic Index	Heavy Grain Index	Heavy Grass Index	Angus Breeding Low Feed Cost Index	Domestic Low Feed Cost Index	Heavy Grain Low Feed Cost Index	Heavy Grass Low Feed Cost Index	AngusPRO Index	Angus Terminal Sire Index
Moore Park U12sv							MPL23U12	\$223	\$189	\$292	\$206	\$378	\$331	\$451	\$418	\$172	\$203
HBR IDENT: MPL23U12 DOB 20/03/2023							A Breed Avg	+200	+166	+264	+184	+345	+298	+412	+386	+149	+185
Expected Average Progeny Values	Calving Ease Direct	Calving Ease Dtrs	Gestation Length	Birth Weight	200 Day Growth	400 Day Weight	600 Day Weight	Mat. Cow Weight	Milk	Days to Calving	Scrotal Size	Carcase Weight	Eye Muscle Area	Rib Fat	Rump Fat	Retail Beef Yield	IMF
MPL23U12	+5.2	+2.6	-3.2	+3.2	+55	+98	+123	+101	+17	-4.6	+3.0	+70	+8.1	-0.7	-1.4	+0.8	+2.1
A Breed Avg	+1.7	+2.7	-4.4	+4.0	+51	+92	+119	+102	+17	-4.6	+2.2	+67	+6.4	-0.1	-0.3	+0.5	+2.3
<div>Sire: CONNEALY IN SURE 8524# Sire: G A R SURE FIREsv Dam: CHAIR ROCK 5050 G A R 8086# Sire: G A R PHOENIXpv Sire: G A R PROPHETsv Dam: G A R PROPHET N744# Dam: G A R DAYBREAK 440#</div> <div>Sire: SITZ UPWARD 307Rsv Sire: EXAR UPSHOT 0562B# Dam: EXAR BARBARA T020# Dam: MOORE PARK M1# Sire: SCOTCH CAP# Dam: KENNY'S CREEK BARA X213# Dam: TE MANIA BARA K150+90#</div>																	
Comments: This bull carries himself very well with added muscle and presence.																	
Purchaser: Price: \$																	
Lot 20							Expected Average Progeny Values	Angus Breeding Index	Domestic Index	Heavy Grain Index	Heavy Grass Index	Angus Breeding Low Feed Cost Index	Domestic Low Feed Cost Index	Heavy Grain Low Feed Cost Index	Heavy Grass Low Feed Cost Index	AngusPRO Index	Angus Terminal Sire Index
Moore Park U48							MPL23U48	\$230	\$196	\$303	\$213	\$395	\$345	\$472	\$442	\$174	\$214
HBR IDENT: MPL23U48 DOB 27/02/2023							A Breed Avg	+200	+166	+264	+184	+345	+298	+412	+386	+149	+185
Expected Average Progeny Values	Calving Ease Direct	Calving Ease Dtrs	Gestation Length	Birth Weight	200 Day Growth	400 Day Weight	600 Day Weight	Mat. Cow Weight	Milk	Days to Calving	Scrotal Size	Carcase Weight	Eye Muscle Area	Rib Fat	Rump Fat	Retail Beef Yield	IMF
MPL23U48	+2.1	+1.0	-2.4	+3.8	+62	+108	+136	+121	+18	-5.2	+3.1	+80	+7.8	-2.0	-2.9	+0.8	+2.3
A Breed Avg	+1.7	+2.7	-4.4	+4.0	+51	+92	+119	+102	+17	-4.6	+2.2	+67	+6.4	-0.1	-0.3	+0.5	+2.3
<div>Sire: CONNEALY IN SURE 8524# Sire: G A R SURE FIREsv Dam: CHAIR ROCK 5050 G A R 8086# Sire: G A R PHOENIXpv Sire: G A R PROPHETsv Dam: G A R PROPHET N744# Dam: G A R DAYBREAK 440#</div> <div>Sire: SITZ UPWARD 307Rsv Sire: TEHAMA UPWARD Y238# Dam: TEHAMA ELITE BLACKBIRD T735# Dam: WATTLETOP ANN M418# Sire: RITO 9M25 OF RITA 5F56 PREDsv Dam: WATTLETOP J283# Dam: WATTLETOP ANN F82#</div>																	
Comments: A soft skinned thick easy doing Phoenix son, with consistand figures across the board.																	
Purchaser: Price: \$																	

- Top 5%
- Top 10%
- Top 20%
- Top 25%

Lot 21							Selection Indexes	Angus Breeding Index	Domestic Index	Heavy Grain Index	Heavy Grass Index	Angus Breeding Low Feed Cost Index	Domestic Low Feed Cost Index	Heavy Grain Low Feed Cost Index	Heavy Grass Low Feed Cost Index	AngusPRO Index	Angus Terminal Sire Index
APR							MPL23U23	\$246	\$209	\$319	\$229	\$421	\$369	\$499	\$471	\$195	\$219
IDENT: MPL23U23							A Breed Avg	+200	+166	+264	+184	+345	+298	+412	+386	+149	+185
EBVs	Calving Ease Direct	Calving Ease Dtrs	Gestation Length	Birth Weight	200 Day Growth	400 Day Weight	600 Day Weight	Mat. Cow Weight	Milk	Days to Calving	Scrotal Size	Carcase Weight	Eye Muscle Area	Rib Fat	Rump Fat	Retail Beef Yield	IMF
MPL23U23	+6.0	+4.5	-3.6	+2.7	+60	+106	+135	+116	+18	-5.4	+3.0	+77	+7.9	-1.5	-1.5	+0.8	+2.1
A Breed Avg	+1.7	+2.7	-4.4	+4.0	+51	+92	+119	+102	+17	-4.6	+2.2	+67	+6.4	-0.1	-0.3	+0.5	+2.3
<div> <div> Sire: CONNEALY IN SURE 8524# Sire: G A R SURE FIREsv Dam: CHAIR ROCK 5050 G A R 8086# Sire: G A R PHOENIXpv Sire: G A R PROPHETsv Dam: G A R PROPHET N744# Dam: G A R DAYBREAK 440# </div> <div> Sire: SUMMITCREST COMPLETE 1P55# Sire: KM BROKEN BOW 002PV Dam: SUMMITCREST PRINCESS 0P12# Dam: MOORE PARK BURNETTE M5# Sire: S A V HARVESTOR 0338# Dam: MOORE PARK BURNETTE K305# Dam: RAFF BURNETTE B148# </div> </div>																	
Comments: A great heifer bull option being from a broken Bow cow that are renowned for calving ease.																	
Purchaser: <div>Price: \$</div>																	
Lot 22							Selection Indexes	Angus Breeding Index	Domestic Index	Heavy Grain Index	Heavy Grass Index	Angus Breeding Low Feed Cost Index	Domestic Low Feed Cost Index	Heavy Grain Low Feed Cost Index	Heavy Grass Low Feed Cost Index	AngusPRO Index	Angus Terminal Sire Index
HBR							MPL23U22	\$258	\$218	\$339	\$241	\$428	\$373	\$514	\$477	\$202	\$222
IDENT: MPL23U22							A Breed Avg	+200	+166	+264	+184	+345	+298	+412	+386	+149	+185
EBVs	Calving Ease Direct	Calving Ease Dtrs	Gestation Length	Birth Weight	200 Day Growth	400 Day Weight	600 Day Weight	Mat. Cow Weight	Milk	Days to Calving	Scrotal Size	Carcase Weight	Eye Muscle Area	Rib Fat	Rump Fat	Retail Beef Yield	IMF
MPL23U22	+5.9	+3.8	-2.8	+3.5	+62	+107	+135	+109	+20	-5.8	+2.6	+73	+6.1	-1.5	-1.7	+0.5	+2.9
A Breed Avg	+1.7	+2.7	-4.4	+4.0	+51	+92	+119	+102	+17	-4.6	+2.2	+67	+6.4	-0.1	-0.3	+0.5	+2.3
<div> <div> Sire: CONNEALY IN SURE 8524# Sire: G A R SURE FIREsv Dam: CHAIR ROCK 5050 G A R 8086# Sire: G A R PHOENIXpv Sire: G A R PROPHETsv Dam: G A R PROPHET N744# Dam: G A R DAYBREAK 440# </div> <div> Sire: C R A BEXTOR 872 5205 608# Sire: G A R PROPHETSV Dam: G A R OBJECTIVE 1885# Dam: MOORE PARK P150# Sire: BON VIEW NEW DESIGN 1407sv Dam: KANSAS ANNIE Y71sv Dam: AMAROO EXPO ANNIE U020# </div> </div>																	
Comments: Another ideal heifer bull with a strong dam line containing Prophet and Kansas Annie. U22 has exceptional selection indexes.																	
Purchaser: <div>Price: \$</div>																	

- Top 5%
- Top 10%
- Top 20%
- Top 25%

<div>Lot 25</div> <div>Moore Park U8</div>								Sire SI Progeny Analysed 1454	Angus Breeding Index	Domestic Index	Heavy Grain Index	Heavy Grass Index	Angus Breeding Low Feed Cost Index	Domestic Low Feed Cost Index	Heavy Grain Low Feed Cost Index	Heavy Grass Low Feed Cost Index	AngusPRO Index	Angus Terminal Sire Index	
								APR IDENT: MPL23U8 DOB 03/03/2023	USA18636106	\$287	\$247	\$368	\$273	\$495	\$437	\$583	\$560	\$243	\$257
								A Breed Avg	+200	+166	+264	+184	+345	+298	+412	+386	+149	+185	
Sire SI Progeny Analysed 1454	Calving Ease Direct	Calving Ease Dtrs	Gestation Length	Birth Weight	200 Day Growth	400 Day Weight	600 Day Weight	Mat. Cow Weight	Milk	Days to Calving	Scrotal Size	Carcase Weight	Eye Muscle Area	Rib Fat	Rump Fat	Retail Beef Yield	IMF		
USA18636106	+8.0	+4.3	-2.7	+3.0	+71	+126	+161	+142	+18	-6.2	+4.4	+94	+9.3	-2.5	-3.1	+1.2	+2.3		
A Breed Avg	+1.7	+2.7	-4.4	+4.0	+51	+92	+119	+102	+17	-4.6	+2.2	+67	+6.4	-0.1	-0.3	+0.5	+2.3		
<div>Sire: G A R EARLY BIRD#</div> <div>Sire: G A R ASHLANDpv</div> <div>Dam: CHAIR ROCK AMBUSH 1018#</div> <div>Sire: G A R HOME TOWNpv</div> <div>Sire: G A R SURE FIRESv</div> <div>Dam: CHAIR ROCK SURE FIRE 6095#</div> <div>Dam: CHAIR ROCK PROGRESS 3005#</div> <div>Sire: S A V HARVESTOR 0338 #</div> <div>Sire: L7</div> <div>Dam: KENNY'S CREEK FINKS MISS F843 #</div> <div>Dam: MOORE PARK N292#</div> <div>Sire: K C F BENNETT PERFORMER#</div> <div>Dam: BOORAGUL GLAZE D55#</div> <div>Dam: BOORAGUL GLAZE A11sv</div> <div>Comments: This Home Town son is mobile and well muscled.</div>																			
Purchaser:								Price: \$											
<div>Lot 26</div> <div>Moore Park U14sv</div>								Selection Indexes	Angus Breeding Index	Domestic Index	Heavy Grain Index	Heavy Grass Index	Angus Breeding Low Feed Cost Index	Domestic Low Feed Cost Index	Heavy Grain Low Feed Cost Index	Heavy Grass Low Feed Cost Index	AngusPRO Index	Angus Terminal Sire Index	
								HBR IDENT: MPL23U14 DOB 18/03/2023	MPL23U14	\$268	\$226	\$342	\$254	\$436	\$380	\$515	\$214	\$215	\$215
								A Breed Avg	+200	+166	+264	+184	+345	+298	+412	+386	+149	+185	
EBVs	Calving Ease Direct	Calving Ease Dtrs	Gestation Length	Birth Weight	200 Day Growth	400 Day Weight	600 Day Weight	Mat. Cow Weight	Milk	Days to Calving	Scrotal Size	Carcase Weight	Eye Muscle Area	Rib Fat	Rump Fat	Retail Beef Yield	IMF		
MPL23U14	+5.1	+6.0	-4.0	+3.6	+57	+99	+129	+103	+22	-6.9	+2.7	+76	+7.7	-1.5	-1.1	+1.2	+2.6		
A Breed Avg	+1.7	+2.7	-4.4	+4.0	+51	+92	+119	+102	+17	-4.6	+2.2	+67	+6.4	-0.1	-0.3	+0.5	+2.3		
<div>Sire: B/R NEW DIMENSION 7127SV</div> <div>Sire: TE MANIA BARTEL B219PV</div> <div>Dam: TE MANIA JEDDA W85#</div> <div>Sire: AYRVALE BARTEL E7pv</div> <div>Sire: MYTTY IN FOCUS#</div> <div>Dam: EAGLEHAWK JEDDA B32SV</div> <div>Dam: EAGLEHAWK JEDDA Z48#</div> <div>Sire: G A R SURE FIRESV</div> <div>Sire: G A R PHOENIXPV</div> <div>Dam: G A R PROPHET N744#</div> <div>Dam: MOORE PARK S36#</div> <div>Sire: SILVEIRAS M811 TOTAL 6103#</div> <div>Dam: WATTLETOP BARUNAH H91#</div> <div>Dam: WATTLETOP BARUNAH E179#</div> <div>Comments: Look at this bull's indexes. It doesn't matter which way you do it top and bottom, this Bartel/Phoenix cross works every time.</div>																			
Purchaser:								Price: \$										Top 5%	
																		Top 10%	
																		Top 20%	
																		Top 25%	

Lot 31 Moore Park U29							Expected Average Progeny Values	Angus Breeding Index	Domestic Index	Heavy Grain Index	Heavy Grass Index	Angus Breeding Low Feed Cost Index	Domestic Low Feed Cost Index	Heavy Grain Low Feed Cost Index	Heavy Grass Low Feed Cost Index	AngusPRO Index	Angus Terminal Sire Index
HBR IDENT: MPL23U29 DOB 01/03/2023							MPL23U29	\$252	\$208	\$339	\$237	\$380	\$324	\$469	\$423	\$188	\$213
							A Breed Avg	+200	+166	+264	+184	+345	+298	+412	+386	+149	+185
Expected Average Progeny Values	Calving Ease Direct	Calving Ease Dtrs	Gestation Length	Birth Weight	200 Day Growth	400 Day Weight	600 Day Weight	Mat. Cow Weight	Milk	Days to Calving	Scrotal Size	Carcase Weight	Eye Muscle Area	Rib Fat	Rump Fat	Retail Beef Yield	IMF
MPL23U29	+1.3	-4.1	-3.7	+4.5	+56	+97	+121	+80	+18	-5.5	+2.3	+70	+9.8	-2.6	-3.7	+0.9	+4.4
A Breed Avg	+1.7	+2.7	-4.4	+4.0	+51	+92	+119	+102	+17	-4.6	+2.2	+67	+6.4	-0.1	-0.3	+0.5	+2.3

Sire: G A R EARLY BIRD#
 Sire: G A R ASHLAND^{PV}
 Dam: CHAIR ROCK AMBUSH 1018#
 Sire: G A R HOME TOWN^{PV}
 Sire: G A R SURE FIRE^{SV}
 Dam: CHAIR ROCK SURE FIRE 6095#
 Dam: CHAIR ROCK PROGRESS 3005#

Sire: G A R PREDESTINED#
 Sire: PA POWER TOOL 9108^{SV}
 Dam: SHAMROCKS BEEBEE QUEEN 3095#
 Dam: MURRAY POWER TOOL K79#
 Sire: TUWHARETOA DIPLOMAT D106^{PV}
 Dam: MURRAY DIPLOMAT H75^{SV}
 Dam: PRIME XOTIC E26#



Comments: Short haired, moderate frame and easy doing Home Town son out of a consistant Power Tool cow.

Purchaser: Price: \$

Lot 32 Moore Park U39sv							Selection Indexes	Angus Breeding Index	Domestic Index	Heavy Grain Index	Heavy Grass Index	Angus Breeding Low Feed Cost Index	Domestic Low Feed Cost Index	Heavy Grain Low Feed Cost Index	Heavy Grass Low Feed Cost Index	AngusPRO Index	Angus Terminal Sire Index
HBR IDENT: MPL23U39 DOB 20/03/2023							MPL23U39	\$266	\$226	\$356	\$250	\$414	\$362	\$508	\$455	\$215	\$215
							A Breed Avg	+200	+166	+264	+184	+345	+298	+412	+386	+149	+185
EBVs	Calving Ease Direct	Calving Ease Dtrs	Gestation Length	Birth Weight	200 Day Growth	400 Day Weight	600 Day Weight	Mat. Cow Weight	Milk	Days to Calving	Scrotal Size	Carcase Weight	Eye Muscle Area	Rib Fat	Rump Fat	Retail Beef Yield	IMF
MPL23U39	+6.7	+3.6	-4.3	+1.8	+50	+89	+104	+76	+16	-6.7	+1.1	+62	+11.2	-0.8	-1.8	+0.8	+4.5
A Breed Avg	+1.7	+2.7	-4.4	+4.0	+51	+92	+119	+102	+17	-4.6	+2.2	+67	+6.4	-0.1	-0.3	+0.5	+2.3

Sire: G A R EARLY BIRD#
 Sire: G A R ASHLAND^{PV}
 Dam: CHAIR ROCK AMBUSH 1018#
 Sire: G A R HOME TOWN^{PV}
 Sire: G A R SURE FIRE^{SV}
 Dam: CHAIR ROCK SURE FIRE 6095#
 Dam: CHAIR ROCK PROGRESS 3005#

Sire: TE MANIA BERKLEY B1^{PV}
 Sire: ALLOURA GET CRACKING G10^{SV}
 Dam: ALLOURA JEDDA Z15#
 Dam: LAWSONS KI GET CRACKING P647 P6477#
 Sire: LAWSONS INCREDIBLE H803^{PV}
 Dam: LAWSONS KI INCREDIBLE L6354#
 Dam: LANDFALL JOYLE E22^{SV}

Comments: Ideal heifer bull. Out of an outstanding G10 cow, U39 promotes low birth, marble and muscle in a moderate stature.

Purchaser: Price: \$

Top 5%
 Top 10%
 Top 20%
 Top 25%

Lot 35							Selection Indexes	Angus Breeding Index	Domestic Index	Heavy Grain Index	Heavy Grass Index	Angus Breeding Low Feed Cost Index	Domestic Low Feed Cost Index	Heavy Grain Low Feed Cost Index	Heavy Grass Low Feed Cost Index	AngusPRO Index	Angus Terminal Sire Index
Moore Park U60sv							MPL23U60	\$222	\$188	\$289	\$204	\$378	\$331	\$450	\$415	\$167	\$206
APR IDENT: MPL23U60 DOB 20/04/2023							A Breed Avg	+200	+166	+264	+184	+345	+298	+412	+386	+149	+185
EBVs	Calving Ease Direct	Calving Ease Dtrs	Gestation Length	Birth Weight	200 Day Growth	400 Day Weight	600 Day Weight	Mat. Cow Weight	Milk	Days to Calving	Scrotal Size	Carcase Weight	Eye Muscle Area	Rib Fat	Rump Fat	Retail Beef Yield	IMF
MPL23U60	+5.5	+3.1	-2.6	+3.5	+57	+101	+128	+107	+15	-3.5	+2.9	+74	+8.1	-1.2	-2.0	+1.7	+1.7
A Breed Avg	+1.7	+2.7	-4.4	+4.0	+51	+92	+119	+102	+17	-4.6	+2.2	+67	+6.4	-0.1	-0.3	+0.5	+2.3
<div> <div>Sire: CONNEALY IN SURE 8524#</div> <div>Sire: G A R SURE FIREsv</div> <div>Dam: CHAIR ROCK 5050 G A R 8086#</div> <div>Sire: G A R PHOENIXpv</div> <div>Sire: G A R PROPHETsv</div> <div>Dam: G A R PROPHET N744#</div> <div>Dam: G A R DAYBREAK 440#</div> </div> <div> <div>Sire: G A R PROPHETsv</div> <div>Dam: KANSAS ANNIE Y71sv</div> <div>Sire: EXAR UPSHOT 0562B#</div> <div>Dam: MOORE PARK IRIS K303#</div> <div>Dam: ABERDEEN ESTATE IRIS F26#</div> </div> <div> <div>Dam: MOORE PARK R21#</div> </div>																	
Comments: M13 produced some of our best homegrown carcass data before his untimely death while also leaving us with some great females that have crossed well with Phoenix.																	
Purchaser:												Price: \$					
Lot 36							Selection Indexes	Angus Breeding Index	Domestic Index	Heavy Grain Index	Heavy Grass Index	Angus Breeding Low Feed Cost Index	Domestic Low Feed Cost Index	Heavy Grain Low Feed Cost Index	Heavy Grass Low Feed Cost Index	AngusPRO Index	Angus Terminal Sire Index
Moore Park T105sv							MPL22T105	\$263	\$228	\$343	\$245	\$421	\$373	\$506	\$462	\$221	\$210
HBR IDENT: MPL22T105 DOB 04/09/2022							A Breed Avg	+200	+166	+264	+184	+345	+298	+412	+386	+149	+185
EBVs	Calving Ease Direct	Calving Ease Dtrs	Gestation Length	Birth Weight	200 Day Growth	400 Day Weight	600 Day Weight	Mat. Cow Weight	Milk	Days to Calving	Scrotal Size	Carcass Weight	Eye Muscle Area	Rib Fat	Rump Fat	Retail Beef Yield	IMF
MPL22T105	+6.4	+5.0	-5.1	+1.8	+50	+90	+106	+88	+10	-7.2	-0.1	+60	+9.1	-0.9	-1.7	+0.9	+3.9
A Breed Avg	+1.7	+2.7	-4.4	+4.0	+51	+92	+119	+102	+17	-4.6	+2.2	+67	+6.4	-0.1	-0.3	+0.5	+2.3
<div> <div>Sire: G A R EARLY BIRD#</div> <div>Sire: G A R ASHLANDpv</div> <div>Dam: CHAIR ROCK AMBUSH 1018#</div> <div>Sire: G A R HOME TOWNpv</div> <div>Sire: G A R SURE FIREsv</div> <div>Dam: CHAIR ROCK SURE FIRE 6095#</div> <div>Dam: CHAIR ROCK PROGRESS 3005#</div> </div> <div> <div>Sire: LCC NEW STANDARDsv</div> <div>Sire: ALCOA NEW STANDARD 427#</div> <div>Dam: ALC 5427 OF 5346-OBJECTIVE#</div> <div>Dam: MURRAY NEW STANDARD K27pv</div> <div>Sire: TE MANIA BERKLEY B1pv</div> <div>Dam: MURRAY BERKLEY F4sv</div> <div>Dam: MURRAY SANDY Y29#</div> </div>																	
Comments: Take your herd to a new standard. A great heifer bull option with standout selection indexes, EMA, yield and IMF.																	
Purchaser:												Price: \$					

- Top 5%
- Top 10%
- Top 20%
- Top 25%

Lot 41							Sire SI Progeny Analysed 2321	Angus Breeding Index	Domestic Index	Heavy Grain Index	Heavy Grass Index	Angus Breeding Low Feed Cost Index	Domestic Low Feed Cost Index	Heavy Grain Low Feed Cost Index	Heavy Grass Low Feed Cost Index	AngusPRO Index	Angus Terminal Sire Index
APR IDENT: MPL22T167 DOB 30/08/2022							USA19266718	\$290	\$249	\$391	\$274	\$430	\$377	\$534	\$471	\$235	\$232
							A Breed Avg	+200	+166	+264	+184	+345	+298	+412	+386	+149	+185
Sire EBV Progeny Analysed 2321	Calving Ease Direct	Calving Ease Dtrs	Gestation Length	Birth Weight	200 Day Growth	400 Day Weight	600 Day Weight	Mat. Cow Weight	Milk	Days to Calving	Scrotal Size	Carcase Weight	Eye Muscle Area	Rib Fat	Rump Fat	Retail Beef Yield	IMF
USA19266718	+4.3	-0.2	-5.8	+2.4	+56	+99	+113	+73	+12	-6.5	+0.9	+70	+13.8	-2.3	-3.9	+1.1	+4.8
A Breed Avg	+1.7	+2.7	-4.4	+4.0	+51	+92	+119	+102	+17	-4.6	+2.2	+67	+6.4	-0.1	-0.3	+0.5	+2.3
<div> <div> <p>Sire: G A R EARLY BIRD#</p> <p>Sire: G A R ASHLAND_{PV}</p> <p>Dam: CHAIR ROCK AMBUSH 1018#</p> <p>Sire: G A R HOME TOWN_{PV}</p> <p>Sire: G A R SURE FIRE_{SV}</p> <p>Dam: CHAIR ROCK SURE FIRE 6095#</p> <p>Dam: CHAIR ROCK PROGRESS 3005#</p> </div> <div> <p>Dam: MOORE PARK R150#</p> </div> </div> <div> <p>Comments: A slick coated, deep bodied bull.</p> </div> <div> <p>Purchaser:</p> <p>Price: \$</p> </div>																	
Lot 42							Selection Indexes	Angus Breeding Index	Domestic Index	Heavy Grain Index	Heavy Grass Index	Angus Breeding Low Feed Cost Index	Domestic Low Feed Cost Index	Heavy Grain Low Feed Cost Index	Heavy Grass Low Feed Cost Index	AngusPRO Index	Angus Terminal Sire Index
HBR IDENT: MPL22T15 DOB 01/04/2022							MPL22T15	\$229	\$194	\$300	\$209	\$347	\$301	\$420	\$380	\$172	\$186
							A Breed Avg	+200	+166	+264	+184	+345	+298	+412	+386	+149	+185
EBVs	Calving Ease Direct	Calving Ease Dtrs	Gestation Length	Birth Weight	200 Day Growth	400 Day Weight	600 Day Weight	Mat. Cow Weight	Milk	Days to Calving	Scrotal Size	Carcase Weight	Eye Muscle Area	Rib Fat	Rump Fat	Retail Beef Yield	IMF
MPL22T15	+1.1	-1.6	-4.8	+3.8	+50	+83	+101	+72	+12	-5.7	+0.8	+59	+10.2	-0.1	-1.8	+1.1	+2.6
A Breed Avg	+1.7	+2.7	-4.4	+4.0	+51	+92	+119	+102	+17	-4.6	+2.2	+67	+6.4	-0.1	-0.3	+0.5	+2.3
<div> <div> <p>Sire: G A R EARLY BIRD#</p> <p>Sire: G A R ASHLAND_{PV}</p> <p>Dam: CHAIR ROCK AMBUSH 1018#</p> <p>Sire: G A R HOME TOWN_{PV}</p> <p>Sire: G A R SURE FIRE_{SV}</p> <p>Dam: CHAIR ROCK SURE FIRE 6095#</p> <p>Dam: CHAIR ROCK PROGRESS 3005#</p> </div> <div> <p>Sire: S A V HERITAGE 6295#</p> <p>Sire: S A V HARVESTOR 0338#</p> <p>Dam: S A V EMBLYNETTE 7749#</p> <p>Sire: EXAR UPSHOT 0562B#</p> <p>Dam: MOORE PARK IRIS K303#</p> <p>Dam: ABERDEEN ESTATE IRIS F26#</p> </div> </div> <div> <p>Dam: MOORE PARK IRIS N14#</p> </div> <div> <p>Comments: Very heavily muscled bull with favourable EMA.</p> </div> <div> <p>Purchaser:</p> <p>Price: \$</p> </div>																	



Top 5%
Top 10%
Top 20%
Top 25%

<div> <div>Lot 43</div> <div>Moore Park T94sv</div> </div>							Selection Indexes	Angus Breeding Index	Domestic Index	Heavy Grain Index	Heavy Grass Index	Angus Breeding Low Feed Cost Index	Domestic Low Feed Cost Index	Heavy Grain Low Feed Cost Index	Heavy Grass Low Feed Cost Index	AngusPRO Index	Angus Terminal Sire Index
<div> <div>HBR</div> <div>IDENT: MPL22T94</div> <div>DOB 30/07/2022</div> </div>							MPL22T94	\$262	\$219	\$349	\$247	\$397	\$343	\$487	\$439	\$211	\$209
							A Breed Avg	+200	+166	+264	+184	+345	+298	+412	+386	+149	+185
EBVs	Calving Ease Direct	Calving Ease Dtrs	Gestation Length	Birth Weight	200 Day Growth	400 Day Weight	600 Day Weight	Mat. Cow Weight	Milk	Days to Calving	Scrotal Size	Carcase Weight	Eye Muscle Area	Rib Fat	Rump Fat	Retail Beef Yield	IMF
MPL22T94	+4.4	+2.0	-4.9	+2.4	+50	+89	+108	+69	+15	-6.4	+1.5	+64	+8.1	-0.9	-1.6	+0.6	+4.7
A Breed Avg	+1.7	+2.7	-4.4	+4.0	+51	+92	+119	+102	+17	-4.6	+2.2	+67	+6.4	-0.1	-0.3	+0.5	+2.3
<div> <div> <div>Sire: G A R EARLY BIRD#</div> <div>Sire: G A R ASHLANDpv</div> <div>Dam: CHAIR ROCK AMBUSH 1018#</div> <div>Sire: G A R HOME TOWNpv</div> <div>Sire: G A R SURE FIRESv</div> <div>Dam: CHAIR ROCK SURE FIRE 6095#</div> <div>Dam: CHAIR ROCK PROGRESS 3005#</div> </div> <div> <div>Sire: CIRCLE A INCENTIVE#</div> <div>Sire: MURRAY INCENTIVE H130pv</div> <div>Dam: TE MANIA QUEANBEYAN D113pv</div> <div>Dam: MURRAY H130 K119#</div> <div>Sire: TE MANIA RED LABEL Z1023 (RED)pv</div> <div>Dam: MURRAY BLACK LABEL H127pv</div> <div>Dam: STRATHEWEN 7127 MITTAGONG A18pv</div> </div> </div>																	
<div> <div> <div>Comments: A bull with length and marble to end the sale on out of one of our best producing cows.</div> <div>Purchaser:</div> <div>Price: \$</div> </div> <div> <div>Top 5%</div> <div>Top 10%</div> <div>Top 20%</div> <div>Top 25%</div> </div> </div>																	

Notes

Tomorrow Starts Today.

First foals to compete in Australia 2025.
Booked Full 2024.

Owned by Plantation Farms LLC



Sylvester
PHOTOGRAPHY



Find Value. Save Time.

www.mooreparklivestock.com

Email: williamson.tom@bigpond.com

Tom: 0429908324

Jane 0427334620

